

eRAD PACS ENTERPRISE EDITION is designed for centralized, high-volume facilities requiring high availability, redundancy, and a secure, robust network infrastructure. eRAD PACS Enterprise Edition acquires data from multiple imaging modalities, information systems, specialty workstations, and other devices, and consolidates it all into a single worklist accessible from anywhere inside or outside the enterprise. The user-friendly worklist is accessed from a centralized server, and provides role-specific tools for performing event driven tasks.

eRAD PACS Enterprise Edition offers:

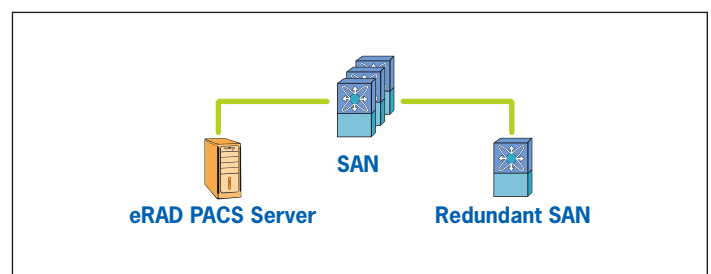
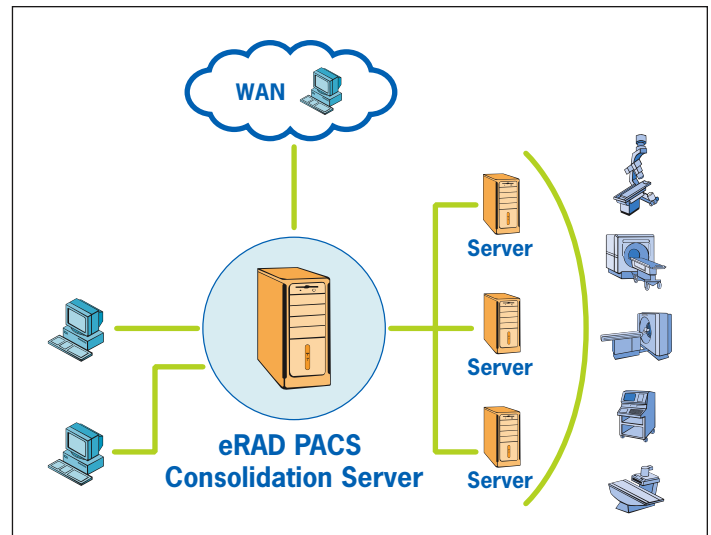
- Turn-key solution for high-volume sites
- Optimum reliability and performance
- Exceptional fault tolerance
- Redundant IP SAN archive and disaster recovery solutions
- Simplified, on-demand expandability
- DICOM and HL7 support
- A great value

Load balancing – eRAD PACS Enterprise Edition manages images, reports, documents and other information across a bank of eRAD PACS Hub servers, linked together through an eRAD PACS Worklist Consolidation server. The eRAD PACS Hub servers balance the workload, increasing response time and system performance. They also simplify future expansion. To increase the PACS data capacity or processing power, just add additional data servers. This leaves the existing components unaffected, reducing down time during system upgrades.

Data redirection – User requests are redirected to the eRAD PACS Hub server that can most efficiently deliver the requested data to the user's workstation. eRAD PACS monitors the network speed between the server and workstation to optimize the delivery of the data, employing dynamic network packet sizing and bit-conserving compression when they improve the overall performance of the system.

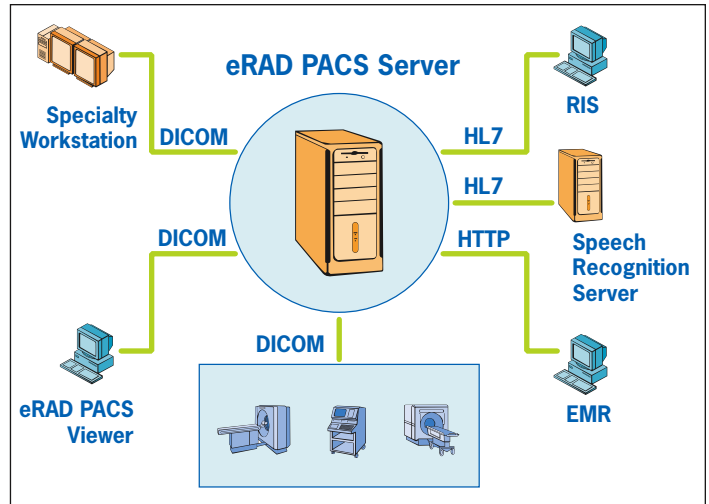
Expandable storage – eRAD PACS Enterprise Edition uses the latest in IP SAN technology for providing reliable, redundant storage. With numerous storage capacity options, the ability to expand as more space as required, and the ability to locate redundant storage equipment in remote locations, eRAD PACS supports countless archiving scenarios and offers HIPAA compliance.

Remote facility support – Remote facilities can be incorporated into the eRAD PACS Enterprise Edition system using eRAD PACS Send Servers. A Send Server guarantees delivery and provides a secure path from the remote facility to the main operations center.





Systems Implementation – With experience operating in vendor-neutral environments, eRAD PACS has fine tuned the process of implementing PACS in the most demanding environments. Our flexible approach to HL7 provides bi-directional HL7 communication to HIS, RIS, EMR, CPR/CPOE, and practice management systems. The eRAD PACS easily- configurable DICOM interface can provide DICOM Modality Worklist, and simple DICOM storage capabilities for a variety of modalities. An available HTTP interface is also available for simple integration third-party systems, providing access to all the images, reports and other data stored in eRAD PACS.



“Installing eRAD PACS has contributed significantly to our double-digit growth in the first year. We’ve seen an increase in productivity without the need to increase staff. The intuitive web interface has been well received by our referring community and helped us secure 100% of their business.

Frank Mollica – Director of Medical Imaging, Casa Grande Regional Medical Center

Diagnostic Viewer – eRAD PACS Classic Edition uses the eRAD PACS Viewer, providing full-fidelity image rendering capabilities, advanced imaging tools including MPR, 3D and synchronized cine mode, and tools for diagnostic interpretation, report dictation, transcription, and speech recognition. Multiple users collaborate through a bi-directional session in which they interactively view and manipulate the same data. After annotating, sizing and positioning clinically significant images, their presentation state can be preserved by attaching them to the report as key images. The eRAD PACS Viewer provides a common interface and tool set regardless of where it is used, including radiology workstations, remote clinical workstations, web-based workstations, and from CDs distributed to referring physicians.

Ask the eRAD team of professionals to assess your needs and tell you more about the features and benefits of the eRAD PACS Enterprise Edition.

