



eRAD PACS CLASSIC EDITION is a flexible, web-based image workflow solution, designed for distributed clinical environments made up of remote imaging facilities, associated through ownership, reading service group or location. The Classic Edition provides complete PACS functionality, including acquisition, archival, and disaster recovery. Options are provided a-la-carte, allowing the system to evolve as your needs mature.

eRAD PACS Classic Edition offers:

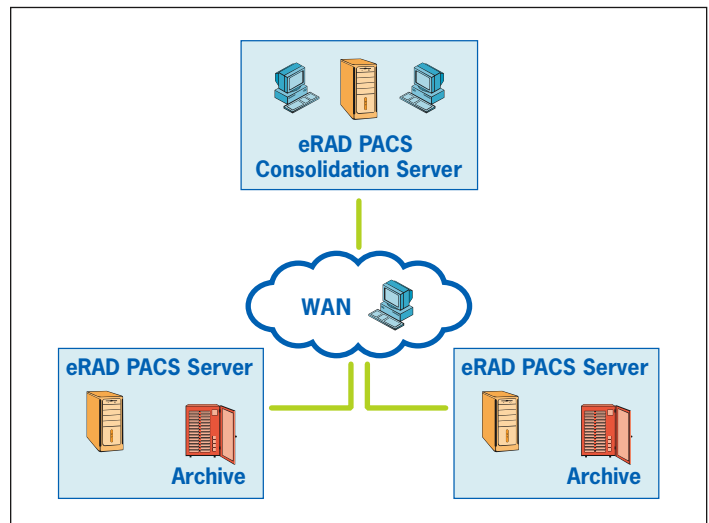
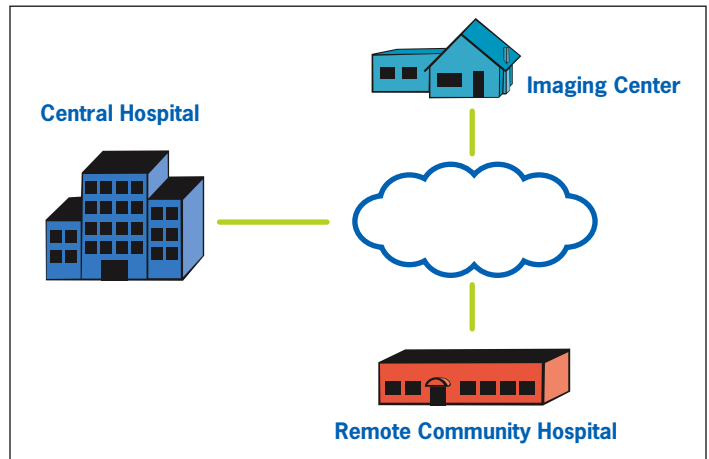
- Reliable worklist consolidation and event driven workflow across distributed facilities
- Customizable configuration, integrating multiple modalities, RIS, EMR and other systems
- Conditional archiving options across multiple storage facilities
- Several data backup solutions available
- Best economical solution with a-la-carte options

Distributed Imaging Environment – eRAD PACS Classic Edition supplies users with consolidated worklists across multiple imaging facilities. Users access data from one or more of these connected facilities based on their assigned access privileges or physical location. Changes made to the data at one facility promptly propagate throughout the eRAD PACS system, keeping the data consistent and accurate for all users.

Download Redirection – Imaging centers connected across a slow or even moderate wide area network still gets the benefit of fast download times to user workstations. eRAD PACS Classic Edition’s Redirection feature automatically determines the fastest retrieval path for any study. The web-based architectural structure is designed for maximum efficiency and flexibility across all network topologies and data rates.

Site-Dependent Archiving – eRAD PACS Classic Edition supports independent archives in each of the imaging facilities. Keep your data from being commingled with another site’s data, yet give radiologists and other users the benefit of seeing all the data from a single worklist. Access to the data in each archive is protected by privileges managed by the system administrator.

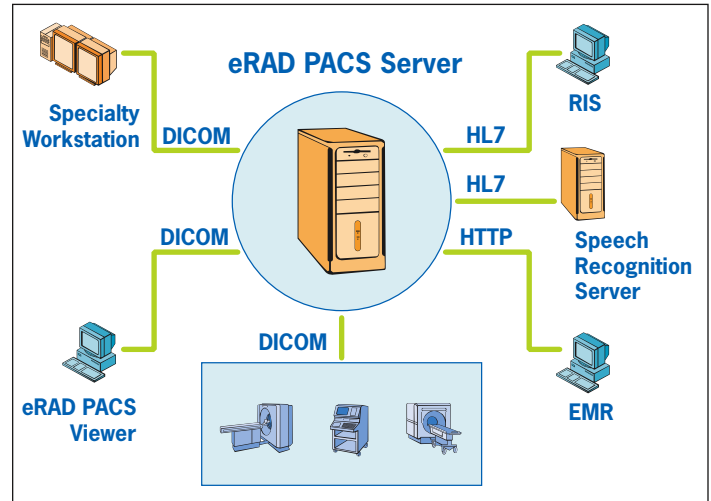
Event Driven Workflow – When multiple facilities come together as a single operating entity, the need for seamless communications is paramount. eRAD PACS Classic Edition has the event driven workflow tools to ensure consistent quality of services. Using eRAD PACS Event Actions, users set up custom events to notify themselves and others when a process needs their attention. eRAD PACS drives the workflow to completion-from studies waiting to be interpreted, to dictations needing transcription, to referring physicians downloading the approved report.





Systems Implementation – eRAD PACS has fine tuned the process of implementing PACS in the most demanding environments. Our flexible approach to HL7 provides bi-directional HL7 communication to HIS, RIS, EMR, CPR/CPOE, and practice management systems. The eRAD PACS easily-configurable DICOM interface can provide DICOM Modality Worklist, and simple DICOM storage capabilities for a variety of modalities. An available HTTP interface is also available for simple integration third-party systems, providing access to all images, reports, and other data stored in eRAD PACS.

Expandability – eRAD PACS Classic Edition allows you to start with what you need right now, and add capacity, incorporate new facilities, and upgrade aging equipment as your business matures. Expanding on an as-needed basis helps keep investment costs to a minimum.



“With five imaging centers, our objective was to centralize our reading and archiving activities to improve turn-around time and reduce storage costs. eRAD PACS has done this for us, without restricting user mobility. Radiologists log in from any of our centers and get a view of all five on a single screen. They are more productive and our referring physicians are better served.”

Michael Remkus – Chief Technology Officer, Midtown Imaging, LLC

Diagnostic Viewer – eRAD PACS Classic Edition uses the eRAD PACS Viewer, providing full-fidelity image rendering capabilities, advanced imaging tools including MPR, 3D and synchronized cine mode, and tools for diagnostic interpretation, report dictation, transcription, and speech recognition. Multiple users collaborate through a bi-directional session in which they interactively view and manipulate the same data. After annotating, sizing and positioning clinically significant images, their presentation state can be preserved by attaching them to the report as key images. The eRAD PACS viewer provides a common interface and tool set regardless of where it is used, including radiology workstations, remote clinical workstations, web-based workstations, and CDs distributed to referring physicians.

Ask the eRAD team of professionals to assess your needs and tell you more about the features and benefits of the eRAD PACS Classic Edition.

