

Dome C5i

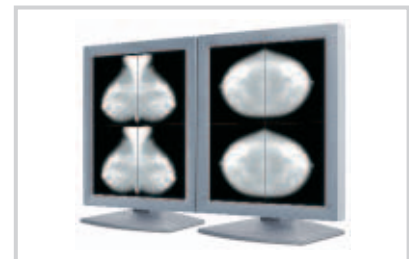
FDA approved. Diagnostic-quality.

DICOM calibrated.

FEATURES:

- > 5-megapixel
- > 21.3-inch diagonal AMLCD screen
- > Automated DICOM calibration
- > 700 cd/m² luminance
- > 2048 x 2560 pixels
- > 3061 unique shades of gray
- > 600:1 contrast ratio

Designed specifically for the display of high-resolution grayscale images such as mammography, the Dome C5i by Planar offers extremely high luminance and displays images in portrait or landscape mode. It provides unequalled grayscale fidelity in a DICOM-calibrated monitor. With exceptional brightness and contrast ratios, the Dome C5i works in well-lit areas as well as in dark radiology reading rooms.



> Available in single or dual head systems



> DICOM conformance and optional display management through Dome CXtra software



SPECIFICATIONS:	
Screen Size	21.3-inch diagonal (540.9 mm)
Display Resolution	2048 x 2560 pixels (portrait) or 2560 x 2048 (landscape) 165 µm, 154 dpi
Screen Type	AMLCD: active-matrix liquid crystal display
Viewing Angle	170 degrees H/V
Brightness	700 cd/m ² or 200 fL (typical)
Palette	3061 unique shades of gray
Contrast Ratio	600:1 (typical)
Calibration	Built-in CXtra calibration with optional remote quality-assurance capabilities
Digital Interface	DVI connector
Power requirements	100 to 240 VAC US, 100 to 220 VAC European, Frequency of 50 to 60 Hz single phase, Less than 90 watts (typical)
Environmental	Operating temperature from 10° C to 40° C
Display size	19.25" x 16" x 3.75" (486 mm x 406 mm x 94 mm)
Display weight	Less than 16 pounds (6.9 kg) each
Mounting options	Compatible with 100 mm VESA mounting standards
Digital communications	DDC2B+, EDID Built-in USB Hub: 1 uplink port, 2 downlink ports

DX DISPLAY CONTROLLER SPECIFICATIONS:

Display configuration	Single- or dual-headed, portrait or landscape
Display depth	8 bits per pixel grayscale up to 2048 x 2560 pixels (1 or 2 heads)
Display memory	32 MB RAM
Graphics processor	Integrated into the memory controller
VGA controller	Full VGA support on high-resolution displays
Palette	8-bit grayscale, 24-bit truecolor
Lookup table	256-entry, 8-bit to 10-bit
Display	Dome CX digital flat-panel displays
Refresh rate	Programmable to 200 Hz
Video output	Digital data up to 360 MP/S
Bus interface	PCI local bus, 32-bit or 64-bit, up to 66 MHZ
Supported signaling levels	DVI Standard
Power consumption	20 watts
Dimensions	Short-slot PCI 6.875" x 4.2" (174.63 mm x 106.68 mm)
Software	Windows 2000, Windows XP, and Solaris. Supports DirectDraw compatible applications, and CXtra DICOM calibration software
Service and support	One-year standard warranty (Extended warranty available)

AMERICAS SALES
 Planar Systems, Inc.
 1195 NW Compton Drive
 Beaverton, OR 97006 -1992, USA
 Phone + 1-503-748-1100
 Fax + 1-503-748-1493
 Email sales@planar.com

MEDICAL SALES
 Planar Systems, Inc.
 400 Fifth Avenue
 Waltham, MA 02451-8738, USA
 Phone: + 1-781-895-1155
 Fax: + 1-781-895-1133
 Email sales@planar.com

EUROPE & ASIA-PACIFIC SALES
 Planar Systems, Inc.
 Olarinluoma 9, P.O. Box 46
 FIN-02201 Espoo, Finland
 Phone + 358-9-42-001
 Fax + 358-9-420-0200
 Email intl@planar.com

© 2004, Planar Systems, Inc. Planar is a trademark of Planar Systems, Inc. Technical information in this document is subject to change without notice.

(Specifications may vary based on specific customized solution requirements.)